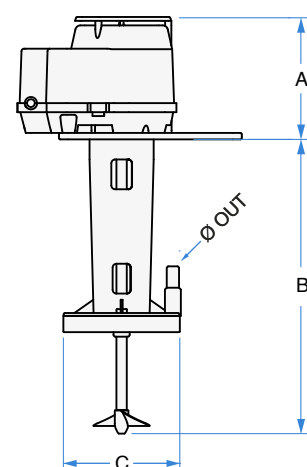
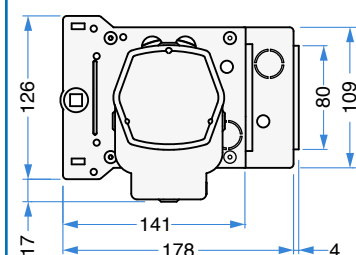
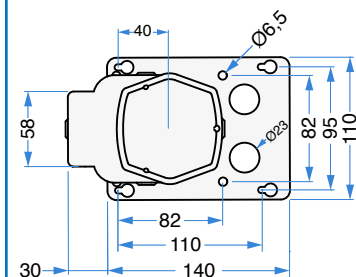
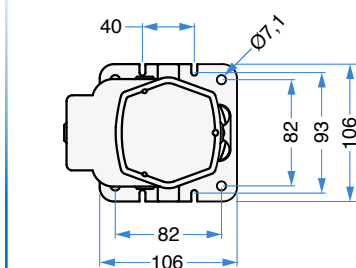
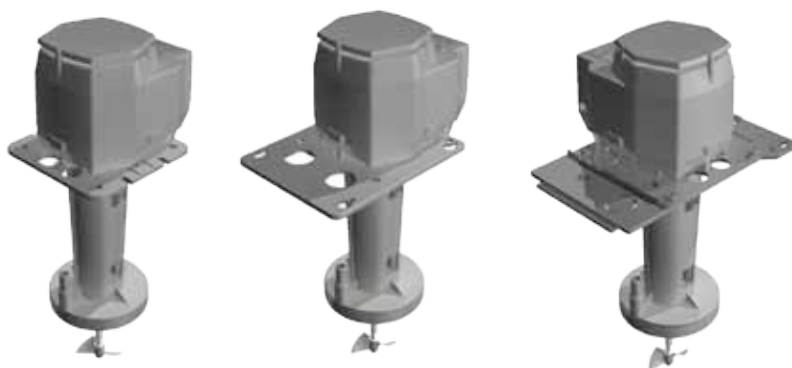
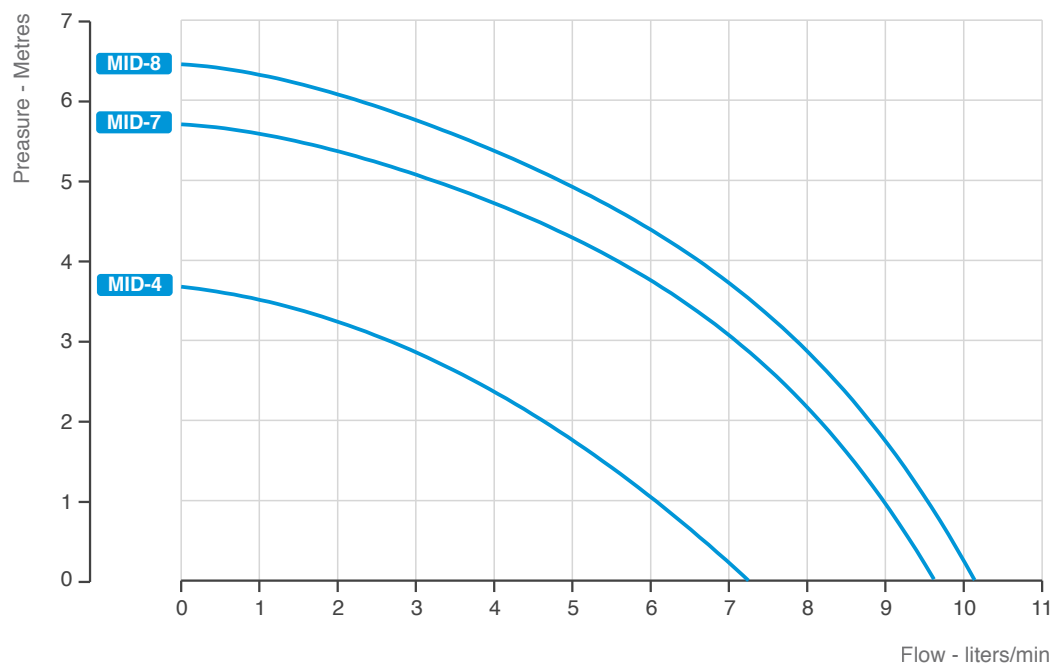


MID agitator-pump series with its small size, is an **economic pump** that can be installed in small or medium refrigerators where **compact dimensions** are required.

Pump	AGITATOR-PUMP with immersed vertical axis.
Windings	Single-phase motor with Class F.
Motor body	Motor covered by plastic shell in PA66 30% glass fiber
Protection	IP 31 degree of protection from liquids seepage.
Safety	Built-in thermal motor protection system.
Ball bearings	Ø 8mm NSK, SKF or equivalent, in semi-rigid noise-insulated silicone casing.
Motor shaft	AISI 303 INOX steel Ø 8mm.
Fastening parts	INOX steel or anti-oxidant materials.
Motor parts	Thermoplastic motor parts resistant to high temperature.
Cooling system	Air cooled pump with a suction speed of 1,6 metre/second.
Water connection	Compatible with John Guest fittings.
Operation	Power supply 220-240Volts - 24 hours a day non stop. Clean water only.
Regulations	Complying with EN60335-2-41:2003/A2:2010 and WEEE/RoHs directives.
Note	Italian PATENTED component. Read the instruction booklet for a correct set up and use.



REGISTERED DESIGN

TYPE		Volt	Hz	Amp	Watt (in)	RPM	A	B	C	Ø OUT	Propeller Ø [mm]	Weight [Kg]
MID-4	❄️	220-240	50	0,57	57	2800	96	153	64	9,5	50 2 Blades 15°	1,75
MID-7	❄️	220-240	50	0,60	64	2750	96	220	78	9,5	50 2 Blades 15°	1,80
MID-7c	❄️	220-240	50	0,60	64	2750	96	153	78	9,5	50 2 Blades 15°	1,75
MID-8		220-240	50	0,60	68	2700	96	220	90	9,5/12,3	50 2 Blades 15°	1,90