

# BEER TOWER

## L type

### L3-100

polished stainless steel

### L3-200

PVD(gold) plated st. steel

### L3-300

Cooper coated st. steel

with st. steel tubes  
(7x8, 10x11 mm)  
or plastic tubes  
(6,7x9,5, 9,5x12,7 mm)

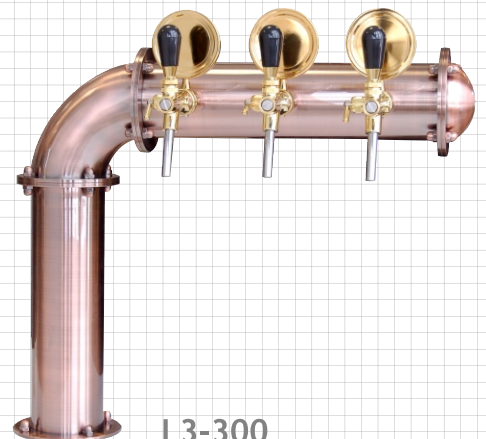
with recirculation  
(7x8 or 6,7x9,5 mm)



L3-100



L3-200



L3-300

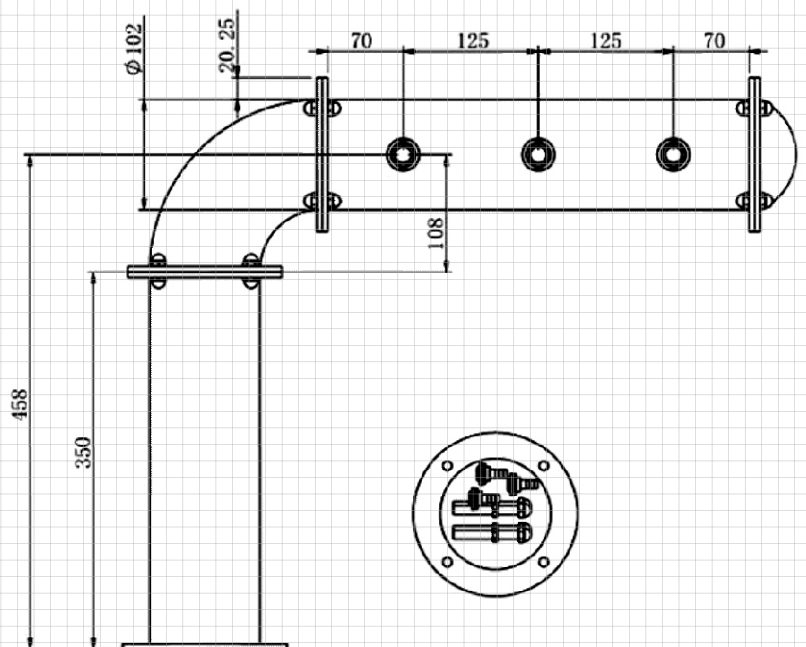
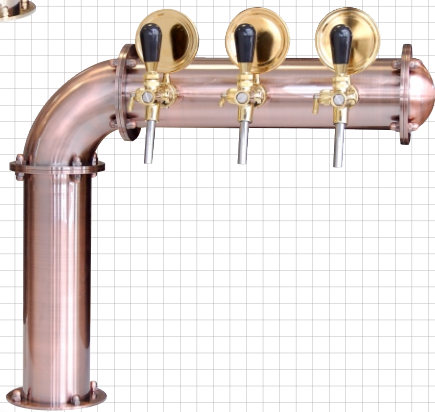
tap connection 5/8"  
with mounting fittings 1"G

# BEER TOWER

## L type



- L3-101 polished st.steel, tubes 7x8 mm + rec.
- L3-201 PVD plated st.steel, tubes 7x8 mm + rec.
- L3-301 cooper coated st.steel, tubes 7x8 mm + rec.



Optional:  
LED illuminated badge holders